

PVR/CD155 Polyclonal Antibody
Rabbit Anti Human Polyclonal Antibody
Catalog # ABV11717**Specification**

PVR/CD155 Polyclonal Antibody - Product Information

Application	WB
Primary Accession	P15151
Reactivity	Human
Host	Rabbit
Clonality	Polyclonal
Isotype	Rabbit IgG
Calculated MW	45303

PVR/CD155 Polyclonal Antibody - Additional Information**Gene ID 5817**

Positive Control	WB
Application & Usage	WB: 1:1000
Other Names	
Poliovirus receptor, Nectin-like protein 5, NECL-5, CD155, PVR, PVS	

Target/Specificity

PVR

Antibody Form

Liquid

Appearance

Colorless liquid

Formulation

PBS with 0.09% (W/V) sodium azide.

Handling

The antibody solution should be gently mixed before use.

Reconstitution & Storage

-20 °C

Background Descriptions**Precautions**

PVR/CD155 Polyclonal Antibody is for research use only and not for use in diagnostic or therapeutic procedures.

PVR/CD155 Polyclonal Antibody - Protein Information

Name PVR

Synonyms PVS

Function

Mediates NK cell adhesion and triggers NK cell effector functions. Binds two different NK cell receptors: CD96 and CD226. These interactions accumulate at the cell-cell contact site, leading to the formation of a mature immunological synapse between NK cell and target cell. This may trigger adhesion and secretion of lytic granules and IFN-gamma and activate cytotoxicity of activated NK cells. May also promote NK cell-target cell modular exchange, and PVR transfer to the NK cell. This transfer is more important in some tumor cells expressing a lot of PVR, and may trigger fratricide NK cell activation, providing tumors with a mechanism of immunoevasion. Plays a role in mediating tumor cell invasion and migration.

Cellular Location

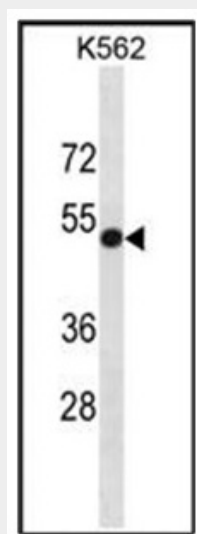
[Isoform Alpha]: Cell membrane; Single-pass type I membrane protein [Isoform Beta]: Secreted.

PVR/CD155 Polyclonal Antibody - Protocols

Provided below are standard protocols that you may find useful for product applications.

- [Western Blot](#)
- [Blocking Peptides](#)
- [Dot Blot](#)
- [Immunohistochemistry](#)
- [Immunofluorescence](#)
- [Immunoprecipitation](#)
- [Flow Cytometry](#)
- [Cell Culture](#)

PVR/CD155 Polyclonal Antibody - Images



Western blot analysis of PVR in K562 cell line lysate.

PVR/CD155 Polyclonal Antibody - Background

The protein encoded by this gene is a transmembrane glycoprotein belonging to the

immunoglobulin superfamily. The external domain mediates cell attachment to the extracellular matrix molecule vitronectin, while its intracellular domain interacts with the dynein light chain Tctex-1/DYNLT1. The gene is specific to the primate lineage, and serves as a cellular receptor for poliovirus in the first step of poliovirus replication. Multiple transcript variants encoding different isoforms have been found for this gene.